

igenix

AIR TREATMENT | HEATING & COOLING | SDA



PRODUCT RANGE

20 INSPIRED BY YOU FOR YEARS

2002



The brand Igenix is born with the introduction of 6 cooling products

2010



The Igenix range grows to over 70 products, including a selection of SDA and heating

2017



Igenix launches its first smart air treatment product

2022



Igenix celebrates its **20 Year** anniversary

We launched our first product in 2002 with a vision that centres on simplicity and functionality in all designs, ensuring that our products are reliable and user-friendly every time.

From our origin in heating and cooling, the Igenix brand has expanded steadily over the past 20 years to now boast over 110 products ranging from dehumidifiers, kettles, toasters, microwaves, refrigeration, heaters, fans, air coolers and air conditioners.

We at Igenix are proud that after 20 years we continue to be 'inspired by you'.

CONTENTS

AIR TREATMENT

Air Conditioners.....	3 - 5
Air Purifiers.....	6
Dehumidifiers.....	7

COOLING

Desk Fans.....	8
Wall Fans.....	8
Air Circulators.....	8
Pedestal Fans.....	9
Tower Fans.....	10 - 11
Turbo Fans.....	11
Air Coolers.....	12

HEATING

Panel Heaters.....	13 - 14
Oil-Filled Radiators.....	14
Convactor Heaters.....	15
Quartz Heaters.....	15
Halogen Heaters.....	15
Fan Heaters.....	16 - 17
Patio Heaters.....	17

SDA

Kettles.....	18
Toasters.....	19
Coffee & Catering.....	20
Table Top Cooking.....	21
Microwaves.....	22 - 24
Refrigeration.....	25 - 26
Linen Care.....	27
Floorcare.....	27



Page 6



Page 17



Page 27

9000BTU 3-in-1 Smart Portable Air Conditioner

White **IG9909WIFI**

- Cooling, fan & dehumidifier
- Wi-Fi enabled - control via Igenix or Tuya Smart Life app on all smart devices
- Compatible with Amazon Alexa
- Remote control included
- Self-evaporating
- 2 Speed fan
- Dehumidifier – 31.2L per day
- Compact & small to suit average sized rooms up to 20m²
- 24 Hour programmable timer
- Sleep mode
- Temperature setting display
- Adjustable louvres for enhanced cooling performance
- Easy to move on rolling castors
- 1.5m exhaust hose
- Environmentally friendly refrigerant R290



1 Start by connecting to your device via wifi...



2 ...Now you're connected, your device is ready to use...



3 ...Begin by turning the unit on or off using your phone or smart device...



4 ...Access the multiple product functions at the touch of a button



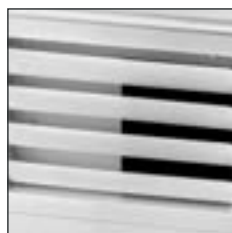
“Alexa, set the air conditioner to 18°”



7000BTU 3-in-1 Portable Air Conditioner

White **IG9907**

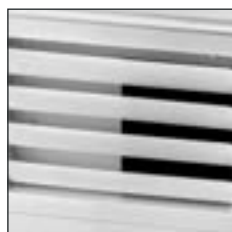
- Cooling, fan & dehumidifier
- Remote control included
- Self-evaporating
- 2050W cooling power
- 2 speed fan
- Dehumidifier – 19.2L per day
- Compact & small to suit average sized rooms up to 15m²
- 24 Hour programmable timer
- Sleep mode
- Temperature setting display
- Adjustable louvres for enhanced cooling performance
- Easy to move on rolling castors
- 1.5m exhaust hose
- Environmentally friendly refrigerant R290



9000BTU 3-in-1 Portable Air Conditioner

White **IG9909**

- Cooling, fan & dehumidifier
- Remote control included
- Self-evaporating
- 2600W cooling power
- 2 Speed fan
- Dehumidifier – 31.2L per day
- Compact & small to suit average sized rooms up to 20m²
- 24 Hour programmable timer
- Sleep mode
- Temperature setting display
- Adjustable louvres for enhanced cooling performance
- Easy to move on rolling castors
- 1.5m exhaust hose
- Environmentally friendly refrigerant R290



9000BTU 4-in-1 Portable Air Conditioner

White **IG9919**

- Cooling, heating, fan & dehumidifier
- Remote control included
- Self-evaporating
- 2500W cooling power
- 2300W heating power
- 3 Speed fan
- Dehumidifier - 26.4L per day
- Compact & small to suit average sized rooms up to 20m²
- 24 Hour programmable timer
- Sleep mode
- Temperature setting display
- Adjustable louvres for enhanced cooling performance
- Easy to move on rolling castors
- 1.5m exhaust hose
- Environmentally friendly refrigerant R290



12000BTU 4-in-1 Portable Air Conditioner

White **IG9922**

- Cooling, heating, fan & dehumidifier
- Remote control included
- Self-evaporating
- 3200W cooling power
- 2900W heating power
- 3 Speed fan
- Dehumidifier - 36L per day
- Compact & small to suit average sized rooms up to 25m²
- 24 Hour programmable timer
- Sleep mode
- Temperature setting display
- Adjustable louvres for enhanced cooling performance
- Easy to move on rolling castors
- 1.5m Exhaust hose
- Environmentally friendly refrigerant R290



Smart Air Purifier with H13 HEPA Filter

White **IG9600WIFI**

- Smart control via Igenix or Tuya Smart Life app & voice command
- Compatible with Amazon Alexa & Google Assistant
- Includes 1 x H13 HEPA filter which removes 99.97% of polluted particles, odours, allergens & dust
- 3 Stage filtration: pre-filter, activated carbon filter & HEPA filter
- UV function destroys germs & bacteria
- Anion function uses ions to remove odours from the air
- Laser sensor provides accurate PM2.5 air quality data
- CADR (M³/H): 400
- Coverage area: 50m²
- Clear digital touch screen display
- 360° Filtration
- Auto, high & sleep modes
- Easy to carry with stylish leather effect handle



SMART CONTROL
via Igenix App
& Voice Command



3 STAGE FILTRATION
Pre-Filter, Activated Carbon
Filter & HEPA Filter



H13 HEPA FILTER
Removes 99.97% of Polluted
Particles, Odours, Allergens
& Dust



12 Litre Per Day Dehumidifier

White **IG9813**

- Dehumidifying capacity: 12L /24hrs
- 2.2 Litre removable water tank
- Active carbon filter
- Ioniser function to purify the air
- 4 Dehumidifying modes
- 2 Fan speeds & child lock
- 24 Hour programmable timer
- Touch control LED display panel
- Auto shut off when tank full
- Continuous drain option (pipe included)
- Operating temperature: 5-32°C
- Suitable for use in areas up to 15m²



20 Litre Per Day Dehumidifier

White **IG9821**

- Dehumidifying capacity: 20L /24hrs
- 5.5 Litre removable water tank
- Active carbon filter
- Ioniser function to purify the air
- 4 Dehumidifying modes
- 2 Fan speeds & child lock
- 24 Hour programmable timer
- Touch control LED display panel
- Auto shut off when tank full
- Continuous drain option (pipe included)
- Operating temperature: 5-32°C
- Suitable for use in areas up to 20m²



30 Litre Per Day Dehumidifier

White **IG9830**

- Dehumidifying capacity: 30L /24hrs
- 3 Litre removable water tank
- 2 Dehumidifying modes
- 2 Fan speeds
- 24 Hour programmable timer
- LED Display panel
- Auto shut off when tank full
- Auto restart function
- Frost protection
- Operating temperature: 5-32°C
- Suitable for use in areas up to 73m²



50 Litre Per Day Dehumidifier

White **IG9851**

- Dehumidifying capacity: 50L /24Hrs
- 6 Litre removable water tank
- 2 Dehumidifying modes
- 2 Fan speeds
- 24 Hour programmable timer
- Touch control LED display panel
- Auto shut off when tank full
- Auto restart function
- Frost protection
- Continuous drain option (pipe included)
- Operating temperature: 5-35°C
- Suitable for use in areas up to 115m²



4 Inch USB Desk Fan

Black **DF0004**

- USB connection
- Adjustable tilt angle
- 1.5m cable
- Anti slip feet



6 Inch Clip Fan

White **DF0006**

- 2 Speed settings
- Adjustable tilt angle
- Quiet operation
- 360° Manual rotation
- 15W power



16 Inch Wall Fan

White **DF1656**

- 3 Speed settings
- Oscillation function
- Wall mounted
- Dual operated - dial or pull cord



9 Inch Desk Fan

White **DF9010**

- 2 Speed settings
- Oscillation function
- Quiet operation
- 25W power
- Adjustable tilt angle



12 Inch Desk Fan

White **DF1210** Black **DF1210BL**

- 3 Speed settings
- Oscillation function
- Quiet operation
- 30W power
- Adjustable tilt angle



16 Inch Desk Fan

White **DF1610**

- 3 Speed settings
- Oscillation function
- Quiet operation
- 45W power
- Adjustable tilt angle



12 Inch Desk Fan

Stainless Steel **DF1250**

- 3 Speed settings
- Oscillation function
- Quiet operation
- 40W power
- Adjustable tilt angle



18 Inch Air Circulator

Chrome **DF1800** Black **DF1800BL**

- 3 Speed settings
- Floorstanding
- High power 120W motor
- Metal blades
- Manual tilting head



16 Inch Pedestal Fan

White **DFI655** Black **DFI655BL**

- 3 speed settings
- Oscillation function
- 40W power
- Overheat protection
- Rubber grip feet
- Adjustable height



16 Inch Pedestal Fan

Stainless Steel **DFI660**

- 3 Speed settings
- Oscillation function
- Height adjustable
- All metal construction
- Weighted base for extra stability
- 45W power



16 Inch Pedestal Fan with DC Motor

White **DFI670**

- 12 Speed settings
- 12 Hour programmable timer
- Digital LED display
- Natural/sleep/silent modes
- Oscillation function
- DC motor
- Auto shut-off
- Power off memory function
- Remote control



12 Inch Mini Tower Fan

White **DF0020WH** | Black **DF0020**

- 2 Fan speed settings
- Oscillation function
- Manual dial control
- Quiet operation
- Integrated carry handle



12 Inch Digital Mini Tower Fan

White **DF0022WH** | Black **DF0022**

- 3 Speed settings
- LED display
- Digital control
- Oscillation function
- Integrated carry handle
- 8 Hour timer



29 Inch Tower Fan

White **DF0029**
Black **DF0029BL**

- 3 Speed settings
- Oscillation function
- 40W power
- Overheat protection
- Rubber grip feet



29 Inch Tower Fan

White **DF0035T**
Black **DF0035TBL**

- 3 Speed settings
- Oscillation function
- 7.5 Hour timer
- Remote control
- 45W power



35 Inch Digital Tower Fan

White **IGFD6035W**
 Black **IGFD6035B**

- LED screen with ambient room temperature display
- 12 Hour timer
- 3 Wind speed settings
- 3 Wind modes
- Touch button control
- Remote control
- Quiet operation
- 85° Smooth oscillation
- Easy carry handle



43 Inch Digital Tower Fan

White **IGFD6043W**
 Black **IGFD6043B**

- LED screen with ambient room temperature display
- 12 Hour timer
- 3 Wind speed settings
- 3 Wind modes
- Touch button control
- Remote control
- Quiet operation
- 85° Smooth oscillation
- Easy carry handle



9 Inch Air Circulator Turbo Fan

White **IGFD4009W**

- Quiet DC motor
- 32 wind speed settings
- 3 wind modes
- 12 hour delay timer
- Digital LED display with touch button and dial control
- Auto-dimming function
- Scented oil diffusing pad
- Aerodynamic turbo design for powerful airflow
- Multi-directional auto oscillation for optimal air circulation - 90° vertical and 360° horizontal
- Remote control
- Integrated carry handle and remote control storage slot
- Auto reset function



5 Litre Evaporative Air Cooler

White **IG9706**

- 3 Fan speed setting
- Oscillation function
- 7 Hour timer
- 3 Wind mode settings
- Humidification function
- LED display
- Remote control
- 5 Litre removable water tank
- Anti drip tank with lid & handle
- Air flow: 330m³/hour
- Integrated carry handle
- 2 x ice packs included



10 Litre Smart Air Cooler

White **IGFD7010WIFI**

- 3 Fan speed settings
- 8 Hour timer
- Smart life app controlled
- Compatible with Amazon Alexa and Google Assistant voice commands
- Humidification function
- 10 Litre removable water tank
- 120° Auto horizontal oscillation
- 45° Manual vertically adjustable louvres
- Touch button control panel
- Remote control included
- Castor wheels for easy movement
- Anti-dust filter
- 2 x ice packs included



50 Litre Air Cooler with LED Display

White **IG9750**

- Fan, air cooler & humidifier
- 3 Speed settings
- Digital LED display
- 12 Hour programmable timer
- 3 Wind modes
- Humidification function
- 50 Litre removable water tank
- Water level window
- 798m³/hour air flow
- Wide angle internal oscillation
- 2 x ice packs included
- Remote control
- Castor wheels for easy movement



Smart Panel Heaters

1.5kW **IG9515WIFI** | 2kW **IG9520WIFI**

- Controlled via the Igenix or Tuya Smart Life app
- LED display
- 24 Hour timer
- Remote control
- Overheat protection
- Waterproof rating IP24
- Aluminium heating element
- Freestanding or wall-mounted
- Easy to move on rolling castors
- App-controlled daily & weekly heating schedule



The Smart Panel Heater is **clear & simple to use** on the Igenix app:

1



Set the desired temperature level

2



Choose which heat setting to use

3



Select a turn off delay with the 24 hour timer

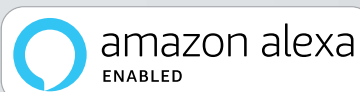
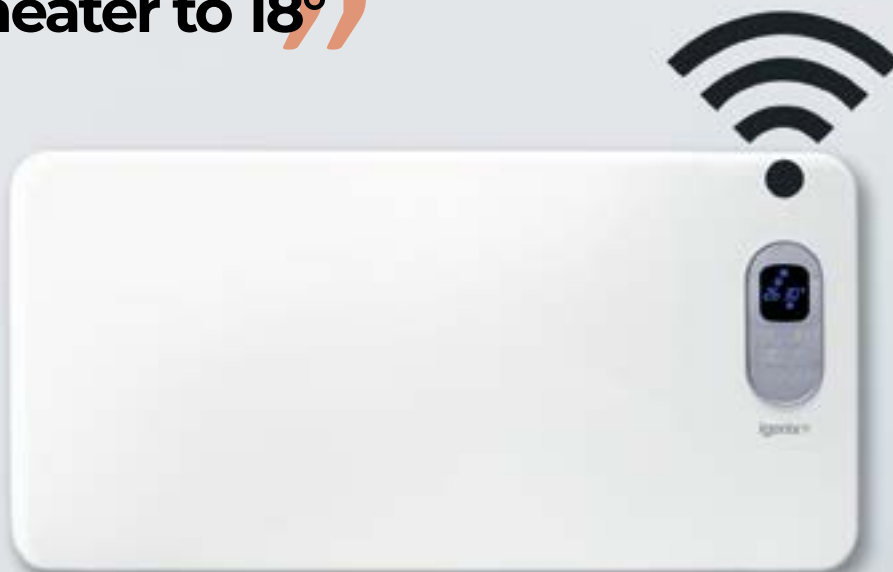
4



Set your own personal heating schedule

The Smart Panel Heater is also **Amazon Alexa enabled**, with users able to turn the unit on or off as well as set the desired temperature

“**Alexa, set the panel heater to 18°**”



Smart Glass Panel Heaters

2kW White **IG9521WIFI**

2kW Black **IG9521BLWIFI**

- Maximum power: 2000W
- Wi-Fi enabled - control via Igenix or Tuya Smart Life app on all smart devices
- Compatible with Amazon Alexa & Google Assistant
- Touch control panel & remote control
- Day & weekly timer
- Power indicator light
- Overheat protection
- Thermostatic cut off
- LED display
- Waterproof rating: IP24
- Freestanding or wall mountable
- Heat resistant housing



Oil-Filled Radiators

- 3 Heat settings
- Adjustable thermostat
- Power indicator light
- Rotary dial control panel
- Heat resistant housing & handle
- Overheat protection
- Tip over switch
- Thermostatic cut off
- Supplied with castors, cable & fitted plug
- Digital 24 hour timer: model IG2621, IG2621BL, IG2626 & IG2626BL only



IG2625



IG2626



IG2626BL

Order Code	Colour	Power (kW)	Output (W)			Dimensions (mm)			Timer
			Low	Medium	High	H	W	D	
IG2615	White	1.5kW	600	900	1500	640	280	330	N
IG2620	White	2kW	800	1200	2000	640	280	408	N
IG2621	White	2kW	800	1200	2000	640	280	393	Y
IG2621BL	Black	2kW	800	1200	2000	640	280	393	Y
IG2625	White	2.5kW	1000	1500	2500	640	280	564	N
IG2626	White	2.5kW	1000	1500	2500	640	280	549	Y
IG2626BL	Black	2.5kW	1000	1500	2500	640	280	549	Y

Colour of product may vary from images shown.

0.8kW Quartz Heater

White **IG9509**

- 2 Power settings: 400W, 800W
- Lightweight & portable
- Tip-over switch
- Wide angle heat reflector
- Instant heat



1.2kW Halogen Heater

Grey **IG9514**

- 3 Heat settings: 400W, 800W, 1200W
- Oscillation function
- Integral carry handle
- Lightweight design
- Tip-over switch



2kW Convector Heater

White **IG5200**

- 3 Heat settings: 750W, 1250W, 2000W
- Freestanding
- Anti-frost & overheat protection
- Adjustable thermostat
- Integrated carry handles



2kW Convector Heater with 24 Hour Timer

White **IG5250**

- 3 Heat settings: 750W, 1250W, 2000W
- Freestanding
- Anti-frost & overheat protection
- Adjustable thermostat
- Integrated carry handles



3kW Convector Heater

White **IG5300**

- 3 Heat settings: 1200W, 1800W, 3000W
- Freestanding
- Adjustable thermostat
- Carry handles
- Anti-frost & overheat protection

2kW Upright Fan Heater

White **IG9021**

- 2 Heat settings: 1000W, 2000W
- Adjustable thermostat
- Oscillation function
- Tip-over & overheat protection
- Carry handle



2kW Fan Heater Flat or Upright

White **IG9010**

- 2 Heat settings: 1000W, 2000W
- Flat or upright position
- Cool air function
- Adjustable thermostat
- Overheat protection



2kW Fan Heater

Black **IG9022**

- 2kW power
- 2 Heating settings & 1 fan setting
- Tip-over switch
- Adjustable thermostat
- Overheating protection
- Steady grip rubber feet
- Heat resistant housing
- Easy to move carry handle
- Power indicator light

1.8kW PTC Ceramic Fan Heater

Silver **IG9030**

- 2 Heat settings: 900W, 1800W
- Adjustable thermostat
- Tip-over & overheat protection
- Safety PTC ceramic heating element
- Cool-touch exterior



2kW PTC Wall Fan Heater

White **IG9042**

- Wall-mounted PTC heater
- Weekly program & open window function
- High thermal efficiency
- Manual & remote controls
- LED display
- 12 hour timer
- Fan, warm & hot modes
- Overheating protection
- Automatic oscillation mode



2kW Industrial Fan Heater

Red **IG9302**

- Stainless steel heating tube
- Adjustable thermostat
- IP44 rated
- Tip over switch
- Suitable for insulated spaces & occasional use



3kW Industrial Fan Heater

Red **IG9301**

- 3 Heat settings: cool, 2000W, 3000W
- Adjustable thermostat
- IP24 rated
- Suitable for insulated spaces & occasional use



1.2kW Portable Patio Tower Heater

Black **IG9650**

- 1200W power
- Water rating: IP55
- Automatic tip-over protection
- Heat resistant handle
- Heat resistant safety mesh
- 2.8m power cord
- Low glare halogen tube
- 360° Heat distribution
- One touch switch
- Stable base with fixing brackets



2.1kW Portable Umbrella Patio Heater

Stainless Steel **IG9651**

- 2100W power
- Water rating: IP44
- Automatic tip-over protection
- Adjustable height: 1.93 - 2.25m
- 3 Heat settings
- 3.8m power cable
- Halogen tube heating element
- 360° Heat distribution
- Remote control
- Waterproof cover
- 90 minute timer



1 Litre Jug Kettle

White **IG7458**

- 2.2kW
- Cordless base
- Illuminated water window
- Removable, washable filter
- Safety locking lid
- Cord storage
- Auto cut off



1.7 Litre Jug Kettle

White **IG7270** | Black **IG7280**

- 2.2kW
- Cordless base
- Safety locking lid
- Cord storage
- Removable, washable filter



1.7 Litre Jug Kettle

White **IG7105** | Black **IG7205**

- 3kW rapid boil
- Cordless base
- Removable, washable filter
- Auto cut off
- Boil dry protection
- Overheat protection



1 Litre Jug Kettle

Stainless Steel **IG7601**

- 2.2kW rapid boil
- Cordless base
- External water level window
- Removable, washable filter



1.7 Litre Jug Kettle

Stainless Steel **IG7251**

- 3kW rapid boil
- Max capacity 1.7L
- Cordless base
- External water level window
- Removable, washable filter



2 Slice Toaster

Black **IG3012**

- Variable browning control
- Bread guide & self centring deep slots
- Reheat, defrost & cancel
- Removable crumb tray



2 Slice Toaster

White **IG3011**

- Variable browning control
- Bread guide & self centring deep slots
- Reheat, defrost & cancel
- Removable crumb tray



4 Slice Toaster

White **IG3020**

- Variable browning control
- 2 Large slots fits 4 slices
- Variable width & self centring deep slots
- Reheat, defrost & cancel



2 Slice Toaster

Stainless Steel **IG3202**

- Variable browning control
- Reheat, defrost & cancel
- Blue illumination on controls
- Slide out crumb tray for easy cleaning
- High lift facility



4 Slice Toaster

Stainless Steel **IG3204**

- Variable electronic browning control
- Reheat, defrost & cancel
- Slide out crumb tray for easy cleaning
- Automatic pop up



Filter Coffee Maker

White **IG8127**

- 1.25L Capacity coffee jug
- Removable funnel with nylon filter
- External water level gauge
- Anti-drip feature
- Keep warm function
- Black plastic housing



Digital Filter Coffee Maker

Stainless Steel **IG8250**

- 1.5L Capacity glass coffee jug
- Makes up to 12 cups
- LCD display
- Removable funnel
- Washable filter
- 24 Hour programmable timer
- Keep warm function
- Anti-drip feature



3.5 Litre Corded Traditional Kettle

Stainless Steel **IG4350**

- 2.25kW
- Max capacity 3.5L
- Immersed element
- Lift off lid
- Detachable power cord
- Power on light indicator
- Auto cut off
- Overheat protection
- Boil dry protection



Catering Urns

8.8 Litre **IG4008** | 15 Litre **IG4015**
18 Litre **IG4018** | 30 Litre **IG4030**

- Keep warm function
- Adjustable thermostat 30 - 100°C
- Automatically turns off when water boils
- Stainless steel single wall construction
- Locking lid & cool touch handles
- Clear water gauge
- Non-drip tap



1.5 Litre Mini Fryer

Stainless Steel **IG8015**

- 1.5 Litre oil capacity
- Adjustable thermostat
- Power & heat indicator lights
- Frying basket with handle
- Brushed stainless steel housing



3 Litre Fryer

Stainless Steel **IGTB1030SS**

- 3.0 Litre oil capacity
- 700g food capacity
- Adjustable thermostat
- Power/heat indicator lights
- Overheat protection
- Can be completely dismantled for easy cleaning
- Lid with viewing window and filter



30 Litre Electric Mini Oven

White **IG7131**

- Suitable for traditional roasting, baking & grilling
- 60 Minute timer
- 1500W oven thermostatically controlled 100°C - 220°C
- Power on indicator light
- Double insulated glass door
- Stainless steel door handle



30 Litre Electric Mini Oven

with Double Hotplates

White **IG7130**

- Suitable for traditional roasting, baking & grilling
- 600W / 1000W double hotplate with 3 temperature settings
- 1500W oven thermostatically controlled 100°C - 220°C
- Power on indicator light
- Double insulated glass door



45 Litre Electric Mini Oven

with Double Hotplates

White **IG7145**

- Suitable for traditional roasting, baking & grilling
- 600W / 1000W double hotplate with 3 temperature settings
- 1600W oven thermostatically controlled 100°C - 220°C
- Power on indicator light
- Double insulated glass door



60 Litre Electric Mini Oven

White **IG7161**

- Suitable for traditional roasting, baking & grilling
- 60 Minute timer
- 2500W oven thermostatically controlled 100°C - 230°C
- Power on indicator light
- Double insulated glass door
- Stainless steel door handle



20 Litre 700W Manual Microwave

White **IG2071**

- 700W
- 5 Power levels
- Defrost function
- 35 Minute timer
- Cooking end signal
- 255mm turntable diameter
- Cavity dimensions (mm): H:206 x W:306 x D:304



20 Litre 800W Manual Microwave

White **IGM0820W**

- 800W
- 5 Power levels
- 35 Minute timer
- Cooking end signal
- 255mm turntable diameter
- Cavity dimensions (mm) - H:206 x W:306 x D:304



20 Litre 800W Manual Microwave

White **IG2083**

- 800W
- 5 Power levels
- 30 Minute timer
- Cooking end signal
- 270mm turntable diameter
- Cavity dimensions (mm): H:212 x W:280 x D:297

STAINLESS STEEL CAVITY



20 Litre 800W Manual Microwave

Silver **IGM0820S**

- 5 Power levels
- 35 Minute timer
- Cooking end signal
- 255mm turntable diameter
- Cavity dimensions (mm): H:206 x W:306 x D:304



20 Litre 800W Manual Microwave

Stainless Steel **IGM0820SS**

- 5 Power levels
- Defrost function
- 35 Minute timer
- Cooking end signal
- 255mm turntable diameter
- Cavity dimensions (mm): H:206 x W:306 x D:304



20 Litre 800W Digital Microwave

White **IG2096** Black **IG2097**

- 800W
- White painted housing
- 5 Power levels
- 8 Auto cooking programmes
- Defrost function by weight & time
- 95 Minute timer
- Cooking end signal
- LED display
- 255mm turntable
- Push button door opening
- White painted interior
- Cavity dimensions (mm):
H:205 x W:306 x D:304.



20 Litre 800W Digital Microwave

Stainless Steel **IGM0821SS**

- 5 Power levels
- 8 Auto programmes
- Defrost function
- 95 Minute timer
- 255mm turntable diameter
- Cavity dimensions (mm):
H:206 x W:306 x D:304



30 Litre 900W Digital Solo Microwave

White **IG3093**

- 900W
- 95 Minute timer
- 5 Power levels
- Child safety lock
- Defrost by time & weight
- 10 Auto cooking menus
- 315mm glass turntable diameter
- Cavity dimensions (mm): H:226 x W:368 x D:328



25 Litre 900W Digital Combination Microwave

Black **IG2590**

- 900W
- 110W grill, 2500W combination
- 95 Minute timer
- 5 Power levels
- Defrost by time & weight
- 10 Auto programmes
- Multi stage cooking
- Cavity dimensions (mm): H:226 x W:346 x D:328



30 Litre 900W Digital Combination Microwave

Silver **IG3091**

- 900W
- 1100W grill, 2500W combination
- 95 Minute timer
- 5 Power levels
- Defrost by time & weight
- 10 Auto cooking menus
- Child safety lock
- Cavity dimensions (mm): H:244 x W:348 x D:334



30 Litre 1000W Digital Combination Microwave

Silver **IG3095**

- | | | |
|--|--|---|
| <ul style="list-style-type: none"> • 1000W • Oven style pull down door • Stainless steel trim • Conventional cooking function • Maximum temperature 230°C | <ul style="list-style-type: none"> • Digital display • 10 Auto cooking programmes • Home fry function • Crispy grill function • Dial & button control | <ul style="list-style-type: none"> • 95 Minute timer • Grill pan & rack accessories • 315mm turntable diameter |
|--|--|---|



44cm Counter Top Fridge

White **IG3711**

- 47L
- Lockable
- 1 Wire shelf & 4L ice box
- 2 Door compartments
- Reversible door
- Product dimensions (mm):
H:510 x W:440 x D:470



44cm Counter Top Freezer

White **IG3751**

- 35L
- Lockable
- 1 Wire shelf
- 4* Freezer rating
- Reversible door
- Product dimensions (mm):
H:510 x W:440 x D:470



48cm Under Counter Larder Fridge

White **IGR1048W**

- 90L
- 2 Adjustable safety glass shelves
- Clear salad crisper
- 3 Door compartments
- Reversible door
- Product dimensions (mm):
H:821 x W:480 x D:500



48cm Under Counter Fridge with Chill Box

White **IGR3048W**

- 89L
- 12L chill box
- 2 Adjustable safety glass shelves
- Clear salad crisper
- 3 Door compartments
- Reversible door
- Product dimensions (mm):
H:821 x W:480 x D:500



48cm Under Counter Fridge with 2* Ice Box

White **IGR2048W**

- 82L
- 8L 2* ice box
- 2 Adjustable safety glass shelves
- Clear salad crisper
- 3 Door compartments
- Reversible door
- Product dimensions (mm):
H:838 x W:480 x D:560



47cm Under Counter Fridge Freezer

White **IG347FF**

- 61L fridge / 26L freezer
- 47cm wide
- Safety glass shelf
- Clear salad drawer
- Reversible door
- Adjustable feet
- Product dimensions (mm): H:837 x W:470 x D:492



POWERSTEAM LITE 1600W Steam Iron

White & Blue **IG3116**

- Non-stick Teflon soleplate
- 220ml Water tank capacity
- Powerful shot of steam
- Continuous and vertical steaming
- Variable steam control
- Direct water spray
- Self-cleaning
- Anti-calc system
- 1.9m Cord length
- LED indicator light



POWERSTEAM 2200W Steam Iron

White & Purple **IG3122**

- Ceramic soleplate
- 250ml Water tank capacity
- Powerful shot of steam
- Continuous and vertical steaming
- Variable steam control
- Direct water spray
- Self-cleaning
- Anti-calc and anti-drip systems
- 1.9m Cord length
- LED indicator light



POWERSTEAM PRO 2600W Steam Iron

Black & Red **IG3126**

- Ceramic soleplate
- 380ml Water tank capacity
- Powerful shot of steam
- Continuous and vertical steaming
- Variable steam control
- Direct water spray
- Self-cleaning
- Anti-calc and anti-drip systems
- 1.9m Cord length
- LED indicator light.



Bagless Upright Vacuum Cleaner

Blue & Grey **IG2430**

- Energy class A++/ Hpu Hf: D / Dpu carpet: E / dust re-emission E
- Noise 80dB
- Capacity: 3L
- 3m Hose
- 6m Power cord
- Detachable handle for extended cleaning use
- Easy handling with air swivel
- Single cyclone filtration system for high cleaning efficiency
- HEPA outlet filtration for hygienic environment
- Tools on board
- Accessory: 3-in-1 brush



igenix

www.igenix.co.uk | 01473 271 272 | sales@bluestemgroup.co.uk